

# Bona References

# Table of Contents

<b>OFFICES AND PUBLIC AREAS</b>	<b>3</b>
House of Sweden - Swedish Embassy, USA	4
Versicherungshaus Deutscher Herold, Germany	5
Nike World Head Quarters, USA	6
Lotja Congress, Spain	7
Ecco shop, Denmark	8
Esprit Boutique, Singapore	9
McGregor, Spain	10
A & L Goodbody, Ireland	11
Kantoor ING Trust, The Netherlands	12
ST Mary's Catholic Primary School, United Kingdom	13
Olympia Multifunctional Shopping Centre, Czech republic	14
<b>HOTELS AND RESTAURANTS</b>	<b>15</b>
Elite Hotel Savoy, Sweden	16
Hotel NH Vigo, Spain	17
Hotel Llaolao, Argentina	18
Hotel Maria Cristina, Spain	19
Clarion Hotel Plaza, Sweden	20
Hotel Rival, Sweden	21
Pub "El comercio", Spain	22
Sotomayor Castle, Spain	23
<b>RESIDENTIALS</b>	<b>24</b>
Private home, Belgium	25
Private home, Italy	26
Esquire House, USA	27
Private home, Italy	28
Private home, Brazil	29
Private home, United Kingdom	30
Silane Based Adhesives, Singapore	31
<b>CULTURAL</b>	<b>32</b>
Museo de la Fundación Proa, Argentina	33
Butrón Castle, Spain	34
Museum of Playing Cards, Spain	35
Vivac Ethnographic Museum, Spain	36
Victoria Eugenia Theatre, Spain	37
Caixa Forum, Spain	38
British Museum – Korean Gallery, United Kingdom	39
National Portrait Gallery, United Kingdom	40
Singapore Art Museum, Singapore	41
British Organ Museum, United Kingdom	42
Stadsschouwburg De Harmonie Theatre, The Netherlands	43
North West Gallery, New Zealand	44
New Cultural Centre, Sweden	45
<b>OUTDOOR AREAS</b>	<b>46</b>
Private home, Argentina	47
Private home, Argentina	48
Fourth Central Park, Beijing	49
<b>SPORTS CENTRES AND HALLS</b>	<b>50</b>
Racing Club de Strasbourg, France	51
Bona Sportive, Latin America	52
Beijing Dong Jiong Badminton Club, P.R China	53
Beijing Science and Technology University, P.R China	54
Shandong Province, P.R. China	55
Wukesong Culture and Sports Center, P.R China	56
Capital Indoor Stadium, P.R China	57



# Bona References

Offices and Public areas





## House of Sweden - Swedish Embassy, USA

Washington D.C., USA

House of Sweden is the Swedish Embassy in Washington D.C. The floor was first polished, and then sealed with a maple colored filler developed especially for this project.

Next came coloring with Bona Parquet Décor Natural. Varnishing was performed using first Bona Prime Intense, then with two coatings of Bona Traffic Matt.

Products used:

Bona Parquet Décor  
Bona Prime Intense  
Bona Traffic Matt





## Versicherungshaus Deutscher Herold, Germany

### Bonn, Germany

An advanced and novel architectural creation, with a futuristic character dominating the ceiling and walls. The floor, however, is based on more traditional wooden lines, despite the curved beech parquet being especially manufactured for the purpose.

The interior is characterized by an impression of airiness and space. The only rustic aspect of the environment is the floor. The beautiful, curved beech boards provide a secure foothold on each of the floors. The light-coloured beech also creates a peaceful atmosphere amongst the profusion of details, open railings and metal design work.

Sanding and finishing work was done by Libuda, a company in Cologne. It was natural that the choice of surface finish for these novel surroundings fell on Bona Mega - an environmentally friendly, water-borne surface finish especially developed for floors where demands for endurance and beauty are paramount.

Type of floor:	Beech strip parquet
Surface area:	1 300 m <sup>2</sup>
Product used:	Bona Mega (3 coats)
Application method:	Bona Roller
Flooring contractor:	Blomberger Holzindustrie
New or Renovated:	New





## Nike World Head Quarters, USA

### Mia Hamm Building, Beaverton, Oregon, USA

When Nike began the expansion of its world headquarters in 1997, company leaders made a commitment to saving energy. All four of the newly completed buildings were built according to Portland General Electric's (PGE) Earth Smart® guidelines for a 20% reduction of the earth's energy load. One of those buildings, named after the 1999 women's U.S. World Cup team captain Mia Hamm, surpasses the guideline with a 30% reduction in energy use.

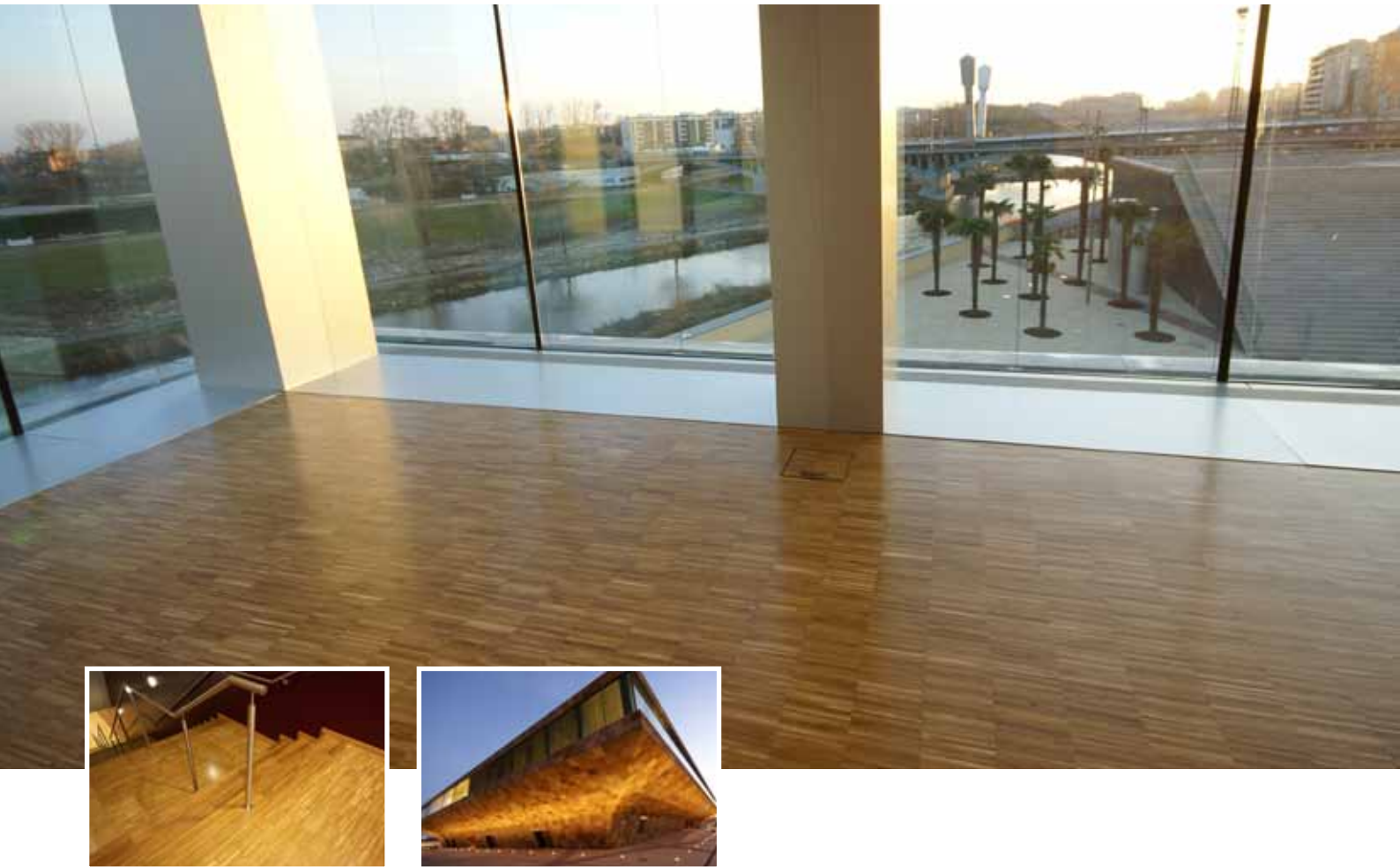
Since low-toxicity building products were required to meet the Earth Smart® requirements, Bona Traffic was the hardwood floor finish selected.

Bona Traffic™ is used to coat the first grade maple floors in the cafeterias, hallways and gift shop, as well as the vice-president's and president's offices. It provided the durability, environmental responsibility and clear, non-ambering beauty which met Nike's interior architectural design and environmental responsibility requirements.

Type of floor:	Maple
Surface area:	7000 m <sup>2</sup>
Products used:	Bona Seal (1 coat) Bona Traffic (3 coats)
Application method:	Foam applicator
Flooring contractor:	Summers Hardwood Flooring
New or Renovated:	Renovated







## Llotja Congress, Spain

### Barcelona, Spain

The Palacio de Congresos de Lleida “La Llotja” is a unitary and massive piece, shaped and structured in three functional bands that allow to reconcile the different uses.

The building is set over 6 floors, including two underground and four above ground. The basement is devoted to parking, with a capacity of 471 parking spaces.

The floors above ground consists of entrance hall, cafe, restaurant, multifunctional hall, main hall, two conference rooms for 200 and 400 people respectively, business center and club La Llotja.

Type of floor:	Industrial parquet of oak
Surface area:	3000 m <sup>2</sup>
Products used:	Bona Mix&Fill Bona Prime Intense Bona Traffic
Flooring contractor:	Parquets Variopark
Year:	2010





## Ecco shop, Denmark

Bredbro, Denmark

Ecco shop in Denmark treated with Bona Prime Classic and Bona Traffic.

Type of floor:

Ash Floor

Products used:

Bona Prime Classic  
(1 coat)  
Bona Traffic (3 coats)







## Esprit Boutique, Singapore

### Singapore

Located in the prime shopping district of Orchard road in Singapore this flag ship store of Esprit shows of the full range of Esprit clothing. In order to give the store a high class look and to ensure a good look for a long time they chose to use Bona Oil. The floor will be maintained using Bona Soap and Bona Carl's Oil 25.

Type of floor:	American White Oak
Surface area:	350 m <sup>2</sup>
Product used:	Bona Oil 45
Application method:	Bona Applicator Pad
Flooring Contractor:	3 Rootz
New or renovated:	New
Year:	2008





## McGregor, Spain

Barcelona, Spain

table
Type of floor:	American Walnut wooden floor
Product used:	Bona R850 Bona Naturale 2-comp
New or Renovated:	New
Year:	2008






## A & L Goodbody, Ireland

### Dublin, Ireland

This stunning bridge is situated in the reception of the Dublin headquarters of Solicitors, A & L Goodbody.

The individual 50 mm oak segments were dowelled to sheet marine plywood on a concrete base and rebated to give the shadow gap detail. Following preparation of the surface, Select Hardwood Flooring applied a single application of Bona Prime and two coats of Bona Mega.

Type of floor:	American White Oak
Surface area:	50 m <sup>2</sup>
Products used:	Bona Prime (1 coat), Bona Mega (2 coats)
Application method:	Bona Applicator
Flooring contractor:	Select Hardwood Flooring
Architect:	Scott Tallon Walker
New or Renovated:	New







## Kantoor ING Trust, The Netherlands

### Amsterdam, The Netherlands

ING Trust is an independent business unit of ING Group and operates through its own offices.

The ING Trust offices throughout the world offer the services necessary to fulfil all legal and other requirements to keep a company in good standing.

At present ING Trust Offices are located in: The Netherlands, the Netherlands Antilles, Aruba, Luxembourg, Hong Kong and Mauritius.

Type of floor:	Bamboo side pressed strips
Surface area:	900 m <sup>2</sup>
Products used:	Bona Prime (1 coat) Bona Mega (2 coats)
Application method:	Bona Roller
Flooring contractor:	Michels Parket Vloeren
New or Renovated:	New





## ST Mary's Catholic Primary School, United Kingdom

### Cardiff, United Kingdom

Following a series of slip incidents, Health and Safety Advisors at Cardiff Council have overseen the re-finishing of the original wooden floors in a local primary school, with a new waterborne finish from Bona comprising of impressive anti-slip properties.

"Slips and falls are the most common form of accident reported to us by schools" explained Janet Lewis, "and we were concerned after three incidents were reported recently involving members of staff - including one which resulted in a broken wrist. We want to prevent further incidents like this."

The floors were sanded back to bare wood and re-coated with Bona Traffic Anti Slip, a new waterborne lacquer which meets the European DIN standard 51130-R10 for slip resistance. It has been specifically formulated by Swedish manufacturer, Bona, for use in schools, hospitals, stairs and corridors, or indeed on any wooden floor fitted in an area where there is an increased demand for slip resistance.

Type of floor:	Pitch Pine Blocks
Surface area:	1500 m <sup>2</sup>
Products used:	Bona Prime Classic (1 coat) Bona Traffic Anti Slip (3 coats)
Application method:	Bona Roller
New or Renovated:	Renovated
Year:	2009





## Olympia Multifunctional Shopping Centre, Czech republic

### Czech Republic

In this complex you can find shops with all kind of goods, restaurants, discotheques, bowling, cinemas and other facilities.

The estimated daily attendance 20 000 persons and in Christmas period even 40 000 persons.

Type of floor:	Oak freezes 22 x 60 x 350 (mm)
Surface area:	1700 m <sup>2</sup>
Products used:	Bona Oil 90 and Carl's HS wax
Application method:	Spatula
Flooring contractor:	Stopo Brno
New or Renovated:	New







# Bona References

Hotels and Restaurants



## Elite Hotel Savoy, Sweden

### Malmö, Sweden

Elite Hotel Savoy in Malmö is of distinguished heritage. The oldest, still remaining part, was built in 1862. But the address has a proud history of 700 years in the hotel business. A lot of famous people have visited the hotel, and many conclusive decisions have been made there.

The hotel has undergone many reverential restorations during the years, keeping the style and charm. The renovation was done in May, 2008 and the oak floor in the 142 m<sup>2</sup> conference room was treated with Bona Naturale 2 component.

Type of floor:	Oak
Product used:	Bona Naturale Base Bona Naturale 2-comp
Flooring contractor:	WL-Parkettslip
New or Renovated:	Renovated
Year:	2008





## Hotel NH Vigo, Spain

### Vigo, Spain

In the heart of Vigo in the north of Spain, this hotel occupies a residential building dated from the beginning of last century (Casas de Oya, 1904).

Its magnificent granite façade decorated in the typical style of that period is crowned with three large architectural roses and has been restored to its original splendour.

Type of floor:	Parquet de roble macizo (400 x 110 x 22 mm)
New or Renovated:	Renovated
Products used:	Bona Mix&Fill Bona Naturale Base (1 coat) Bona Naturale 2- comp. (2 coats)
Application method:	Bona Roller
Year:	2009







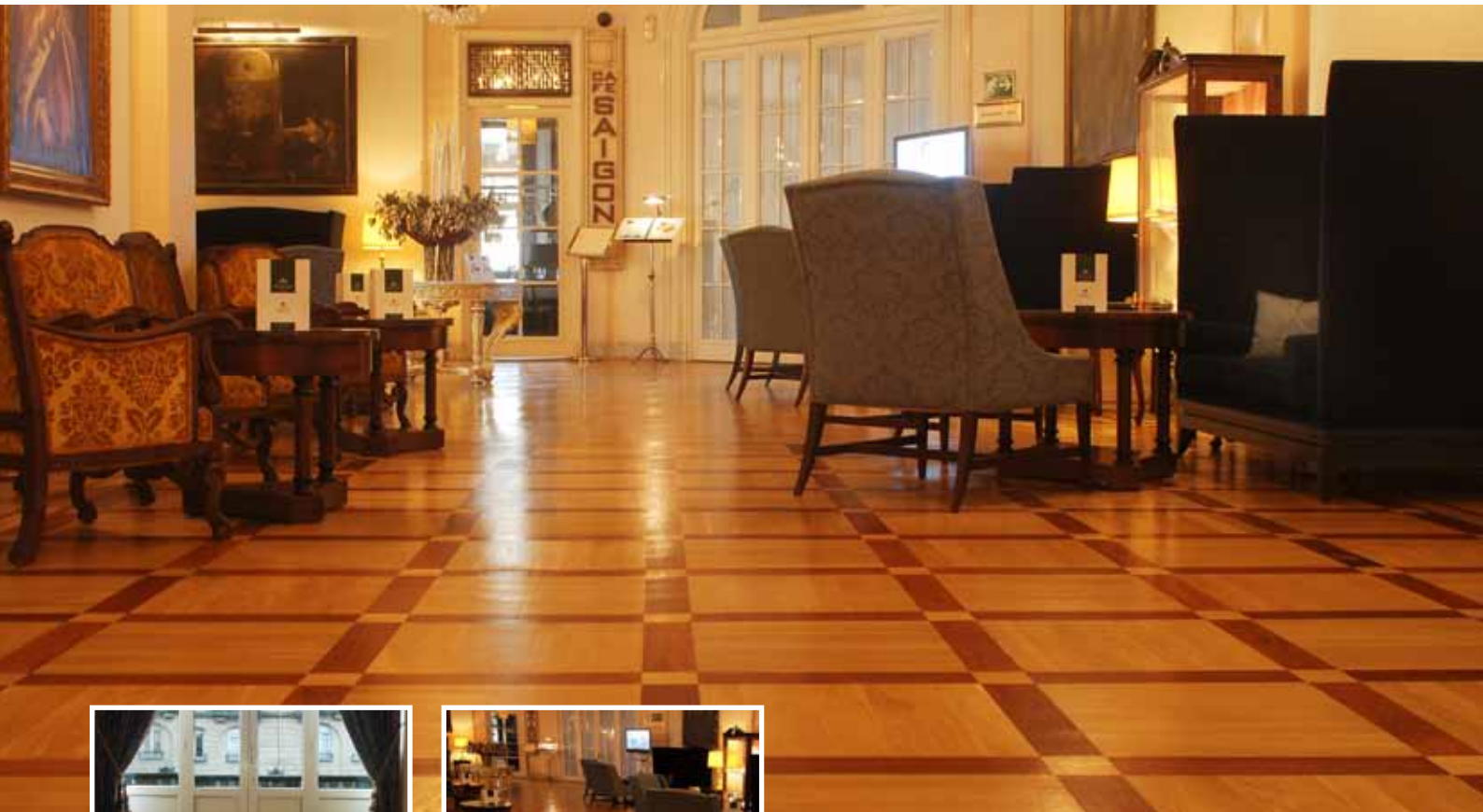
## Hotel Llao Llao, Argentina

Patagonia, Argentina

Llao Llao Hotel & Resort, Golf-Spa is one of the most famous hotels in Patagonia, Argentina. With its handcrafted boards of solid wood Cypress and Pine-Hemlock used for the floorings the hotel is a member of The Leading Hotels of the World. Members of the aristocracy, officials, diplomats and famous guests have stayed at the hotel and was recently used in a summit meeting with all the Presidents in South America.

Type of floors:	Cypress and Pine-Hemlock
Products used:	Bona Prime Classic (1 coat) Bona Mega (2 coats)
Application method:	Bona Roller
New or Renovated:	Renovated
Year:	2009





## Hotel Maria Cristina, Spain

### San Sebastián, Spain

The most emblematic Hotel in San Sebastián, the Majestic Maria Cristina, has 136 luxury rooms and "Belle Epoque" style suites.

Hotel Maria Cristina has been nominated to the best Spanish urban hotel for the gold list 2010 of Conde Nast Traveler.

Type of floor:	45 Strips Draught-board of Oak and Jatoba
Surface area:	300 m <sup>2</sup>
Product used:	Bona Mix&Fill Bona Traffic (2 coats)
Flooring contractor:	San Juandarra/ Cb.Haizkibel iribidea
New or Renovated:	Renovated
Year:	2010







## Clarion Hotel Plaza, Sweden

### Karlstad, Sweden

When the Swedish hotel was renovated, Bona's products were used all through the renovation work including Bona's machines and the adhesive tool - Bona Optispread.

Once the floor was fastened with the help of Bona Optispread, it was treated with Bona Mix&Fill and finished with Bona Prime Intense and three coats of Bona Mega Extra Matt.

Type of floor:	Walnut
Surface area:	300 m <sup>2</sup>
Products used:	Bona R580 Moisture barrier Bona R850T Adhesive + Bona Optispread Bona Mix&Fill Dust free sanding with Bona machines and abrasives Bona Prime Intense Bona Mega Extra Matt
Flooring contractor:	BBM Karlstad AB
New or Renovated:	New
Year:	2010



**Bona®**





## Hotel Rival, Sweden

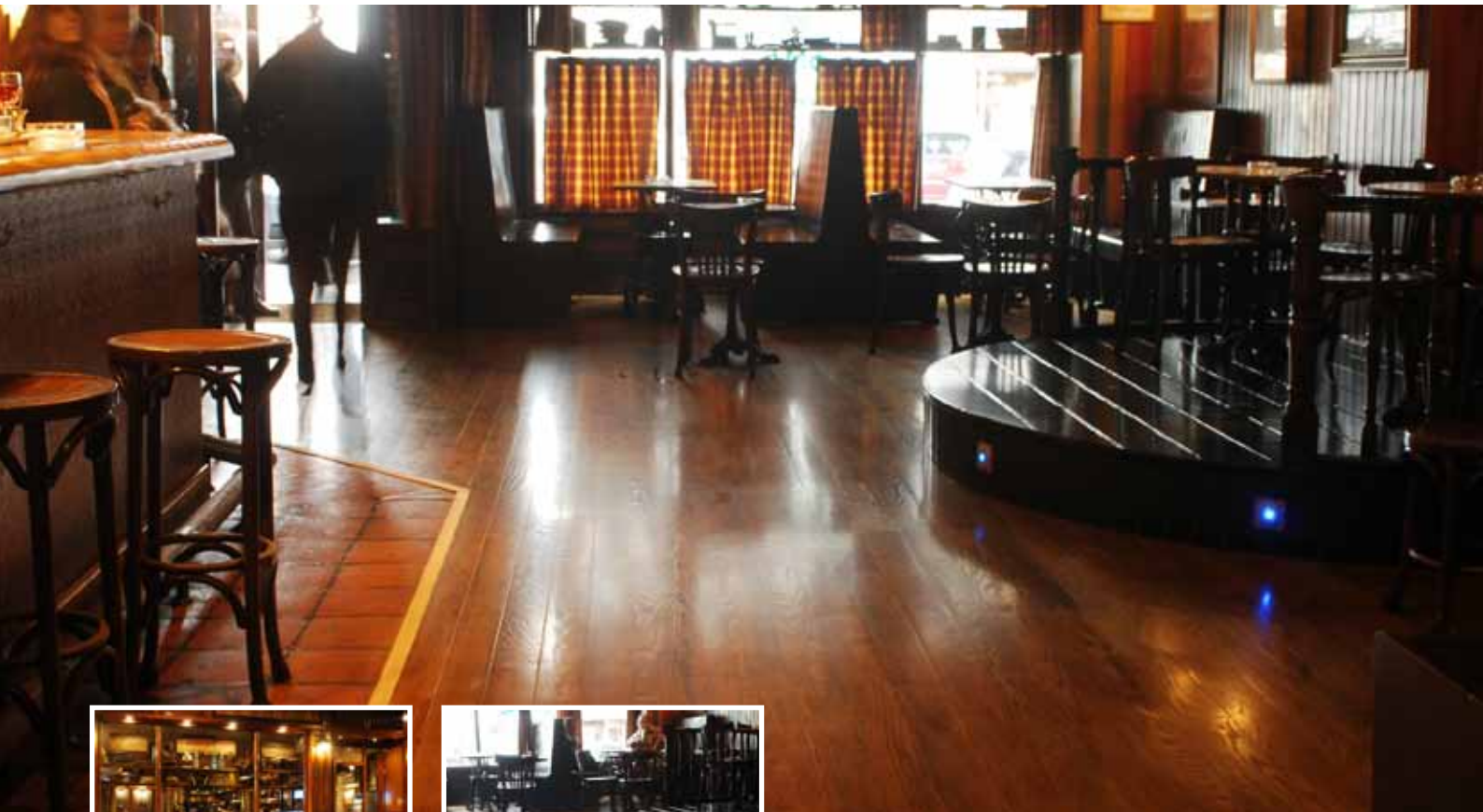
### Stockholm, Sweden

The Rival is a boutique hotel with its own cinema located in the heart of Stockholm, Södermalm. The hotel is shaped by the vision of its owner Benny Andersson (Co-founder and member of former music group ABBA) who wanted to recapture the glamour of the hotel from when it original opened as the Aston hotel in the 1930s.

In addition to the Rival Cinema there are bars, a bistro, a cafe and a bakery... In short, it's an ideal meeting place on the city's most beautiful square, Mariatorget.

Type of floor:	Oak
Surface area:	232 m <sup>2</sup>
Product used:	Bona Traffic
Year:	2004





## Pub “El comercio”, Spain

### Vizcaya, Spain

“El Comercio” in Getxo in the province of Vizcaya in Spain is a Tavern Pub designed carefully in English style. It is decorated with plenty of wood, rich colours and soft lights.

Type of floor:	Parquet Oak (9 cm approx)
Surface area:	60 m <sup>2</sup>
New or Renovated:	Renovated
Products used:	Bona Prime Intense Bona Traffic Silk matt
Flooring contractor:	Jose Antonio Sanchez
Year:	2010







## Sotomayor Castle, Spain

Galicia, Spain

The Sotomayor Castle is a building with a double walled perimeter of oval and irregular shape. It has two entrances, the south is now used for public access.

Type of floor:	Jatoba
Surface area:	450 m <sup>2</sup>
Products used:	Bona Prime Intense (1 coat) Bona Traffic Silkmat (2 coats)
Flooring contractor:	Parquets Mazeira S.L
New or Renovated:	Renovated
Year:	2010







# Bona References

## Residentials



## Private home, Belgium

### Auderghem, Belgium

Private home in Auderghem, Belgium. After sanding to bare wood, 2 coats of Bona Naturale were applied with a roller to the 160 square meters floor.

Type of floor: Wenge  
Product used: Bona Naturale  
Application method: Bona Roller





## Private home, Italy

### Lake Garda, Italy

This beautiful living room close to Lake Garda in Italy is coated with Bona Naturale for the estetic, low maintenance, easy reparation and way the light reflected on the floor.

The wooden floor was also stained using Parquet Décor Wenge. Bona R850 was used to glue down the wooden floor.

Type of floor:	Oak
Surface area:	75 m <sup>2</sup>
Products used:	Bona R850 Bona Naturale Base Bona Naturale 1-comp. & 2-comp.
Application method:	Bona Roller
New or Renovated:	New
Year:	2009







## Esquire House, USA

### Hollywood Hills, California

34 gallons of Bona Naturale and 11 gallons of Bona DTS were donated for finishing the hardwood floors of the Ultimate Bachelor Pad. Located in the stylish and sophisticated Hollywood Hills, in the celebrity-studded "bird streets" area, the Esquire House Ultimate Bachelor Pad was built by award winning designers and architects, Xorin Balbes and Paul Ashley. With the help of renowned designers and luxury brands, a \$14 million, four-bedroom, seven-bathroom house was turned into a home worthy of the ultimate bachelor.

The 7,400 square foot space includes five fireplaces, 450 square foot pool and spa, 10 flat-screen televisions, a soundproof screening room, and an 800-bottle climate-controlled wine cellar. Hand-distressed, white-oak floors run throughout the house and are finished with Bona Naturale. The finish fit the need for a high-end, natural look the designer sought with high durability to mask the wear of the many events held at the home. Rock the Vote, VH1 Save the Music, Hollywood Entertainment Museum, Oxfam America, and City of Hope filled out the 2008-2009 calendar. The luxury lifestyle venue serves as a fundraising platform, as all events are connected to leading national charities.

Type of floor:	White Oak
Finish:	Bona Naturale
Sealer:	Bona DTS
Application:	Roller
Flooring Contractor:	John Rouse, Restore Your Floor – Southern California
New or Renovated:	New
Year:	2008





## Private home, Italy

Verona, Italy

Products: Bona Naturale 1-comp, Naturale 2-comp & Bona R850. They choosed Bona Naturale for the estetic, low maintenance, easy reparation and the way the light reflected on the floor.

Type of floor:	Oak
Surface area:	75 m <sup>2</sup>
Products used:	Bona R850 Bona Naturale Base Bona Naturale 1-comp. & 2-comp.
Application method:	Bona Roller
New or Renovated:	New
Year:	2009





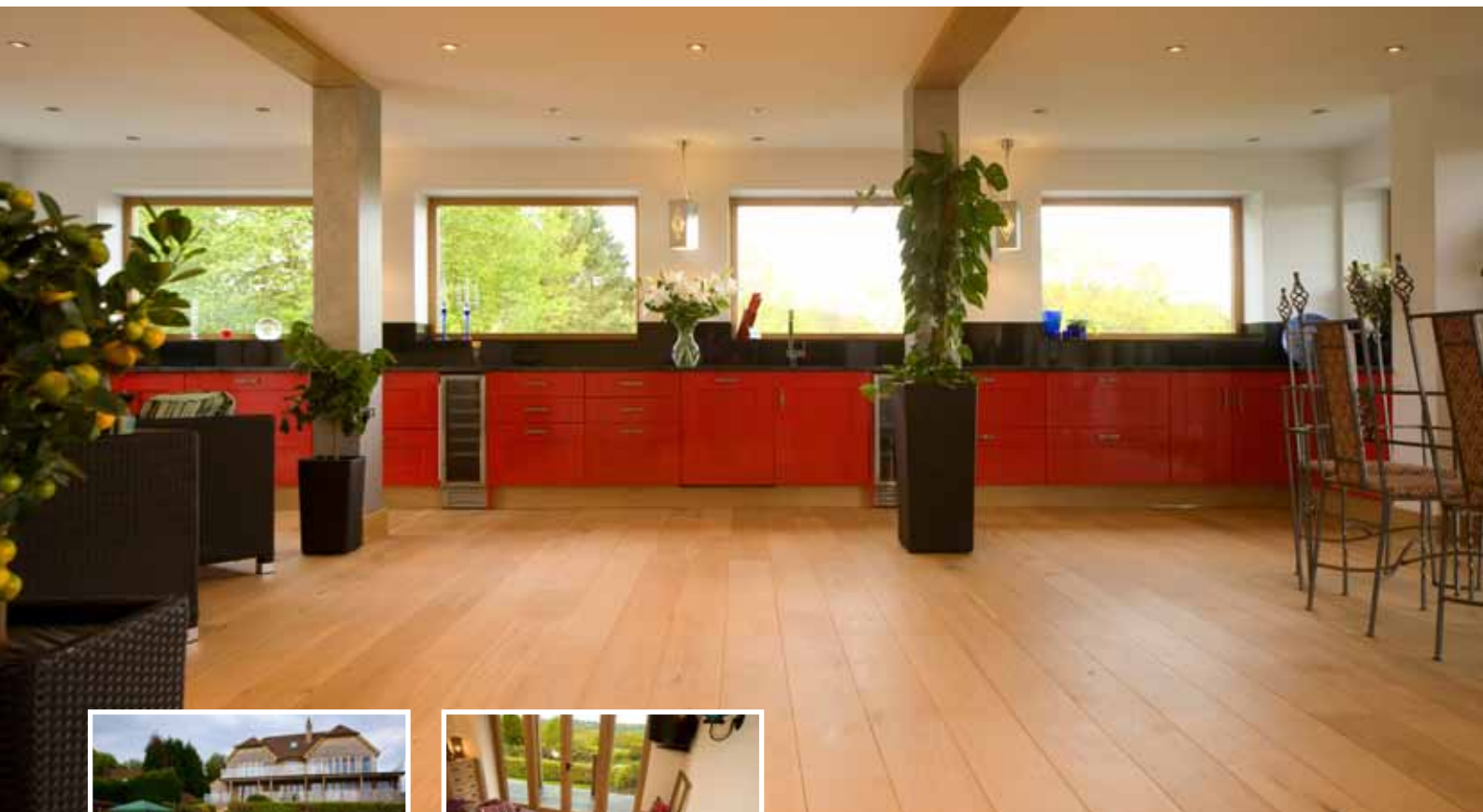
## Private home, Brazil

### Brazil

This beautiful kitchen in a private home in Brazil has a floor of hand scraped Brazilian Cherry (Jatoba).

Type of floor:	Jatoba
Product used:	Bona Industrial Coating System
Flooring contractor:	Novopiso S/A





## Private home, United Kingdom

### Sussex, United Kingdom

This fabulous newly built country house in Sussex, England, was built by its Danish owner after an older house on the same site was destroyed by a fire. A total of 230 sq metres of new oak flooring was finished with Bona Naturale. The owner wanted a totally natural looking surface finish to the floor which would match the natural look of the exposed oak beams in the roof. Bona Naturale provided the perfect finish which she compared to the soft, almost silver/grey look of driftwood and which would not yellow with time. To maintain the surface all that is required is regular sweeping and ready to use Bona Wood Floor Cleaner spray when required to remove any marks.

Type of floor:	French Oak, 190 mm wide engineered boards
Product used:	Bona Naturale 1-comp
Application method:	Bona Roller
Main contractor:	SD Newbury, Battle
New or Renovated:	New
Year:	2010





## Silane Based Adhesives, Singapore

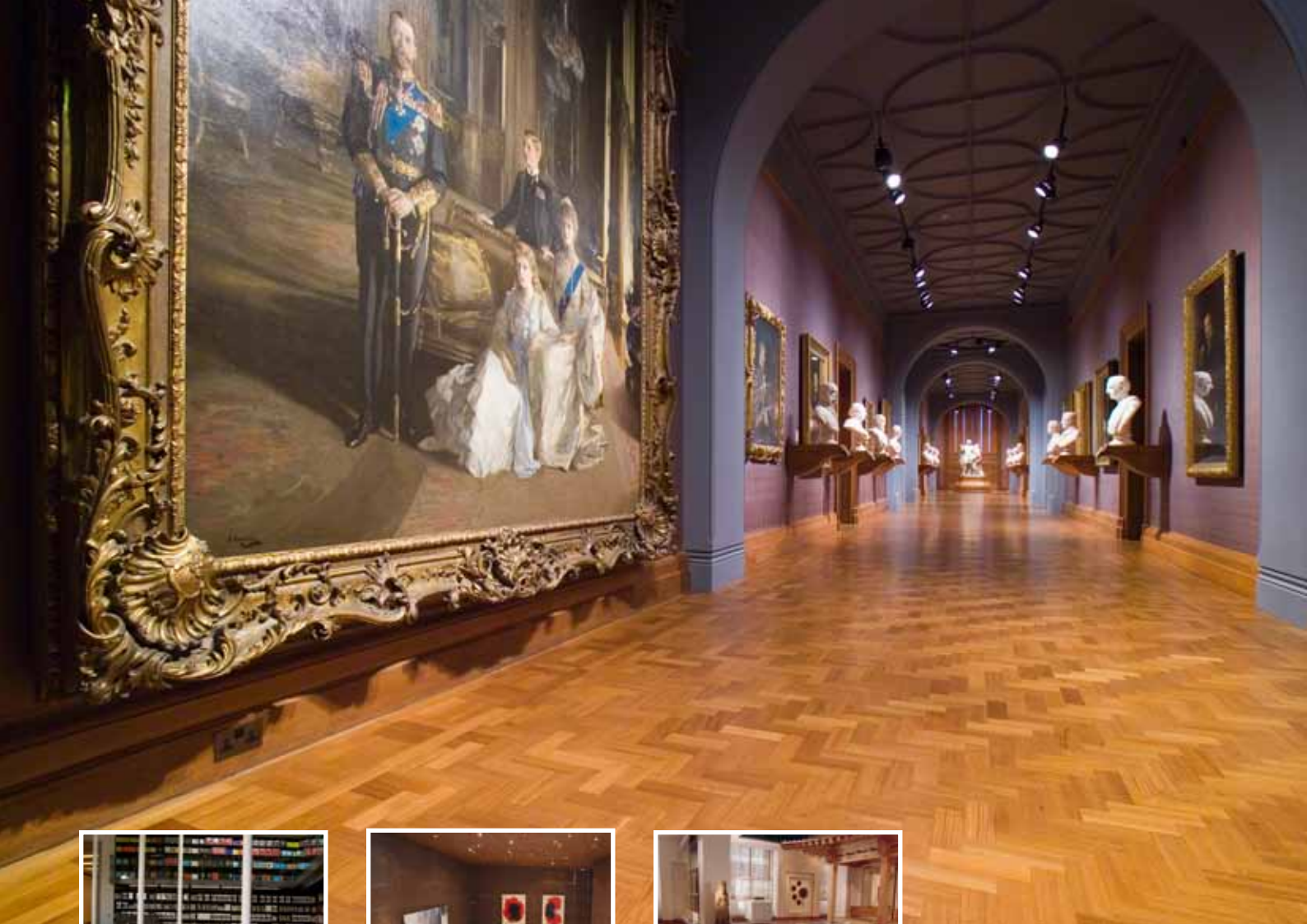
### Singapore

Together with Sustainable Focus, the distributor of Bauwerk in Singapore and part of the Straits Construction Group, Bona has been able to secure 4 projects totaling 35,000 m<sup>2</sup> supplying our Bona Silane based reactive adhesives for installation with Bauwerk's pre-finished engineered flooring which is coated with Bona UV Finishes. Bona maintenance products will also be delivered to the projects to ensure a good look. A perfect example on how Bona can assist with our World-Wide presence, Bona System and Life Time Support.



Project Name	Type	Wood Floor Size	Adhesive	Status
Fidelio Street Development Housing	Housing	2,000 m <sup>2</sup>	Bona R845	Completed in September 2009.
Versillia On Haig	Condominium	10,000 m <sup>2</sup>	Bona R845	Commence October 09 ~ June 2010
CityView @ Boon Keng	HDB – DBSS	20,000 m <sup>2</sup>	Bona R850	Commence Nov 09 ~ June 2010
Charlton villas	Housing	3,000 m <sup>2</sup>	Bona R850	Commence March 09

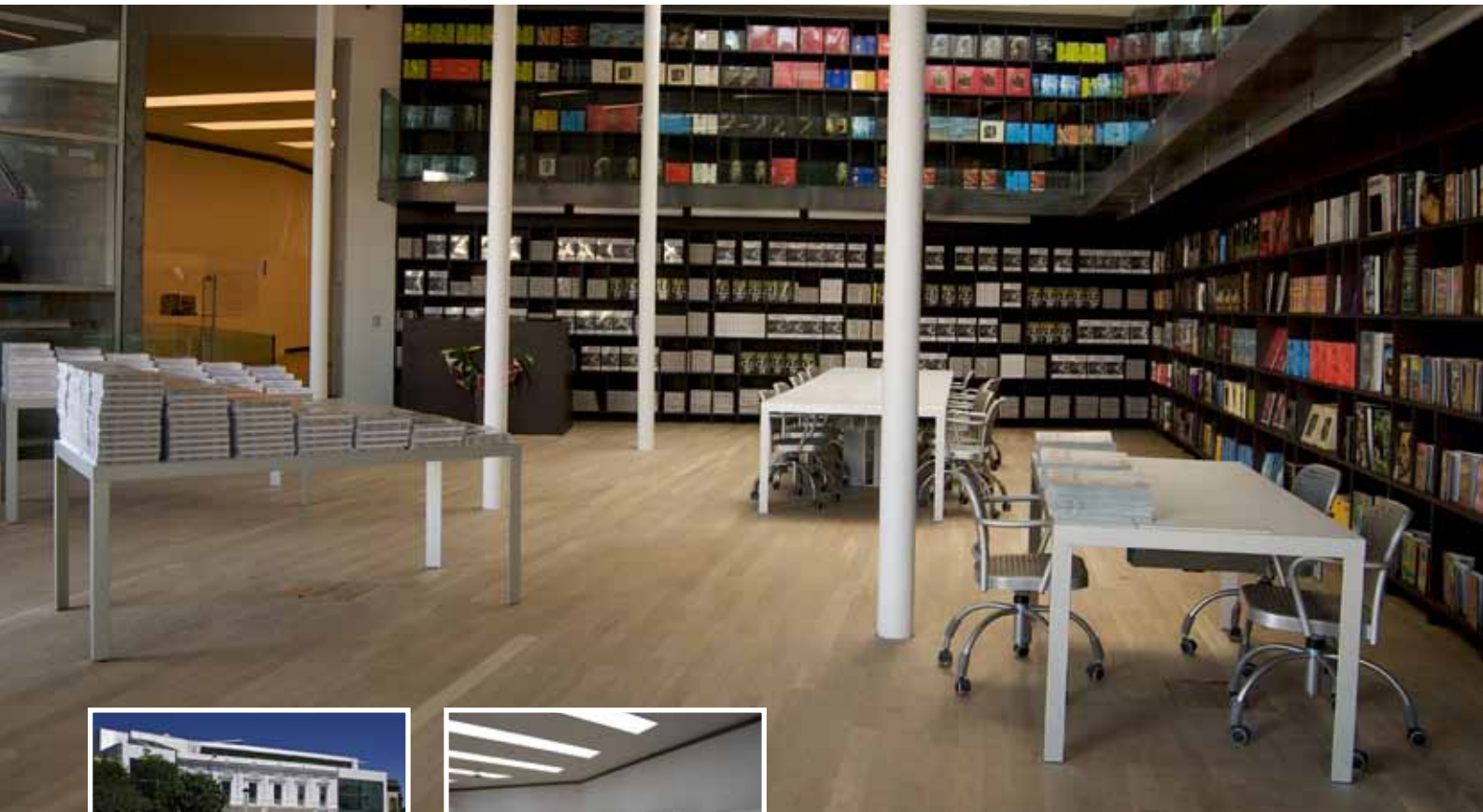




# Bona References

## Cultural





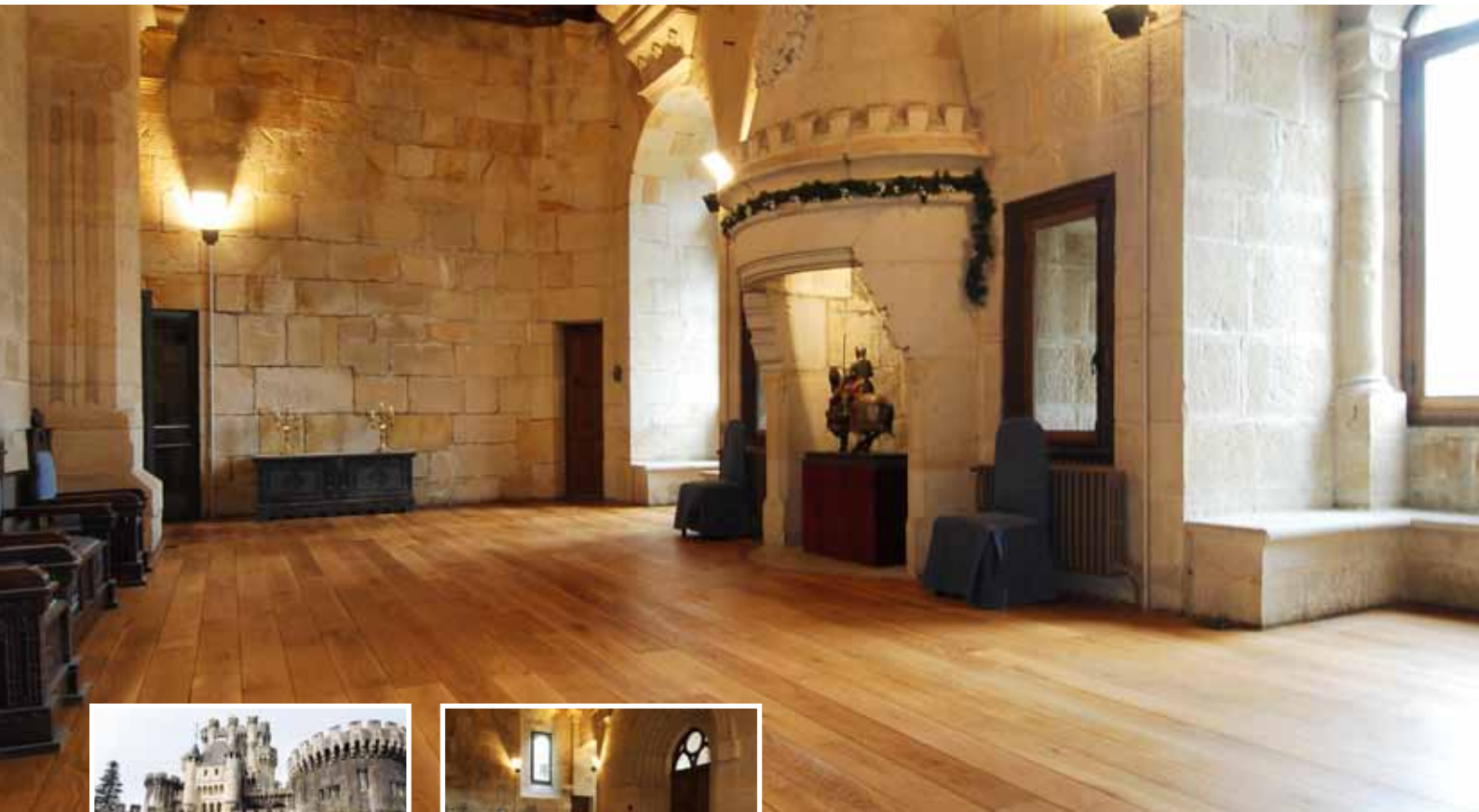
## Museo de la Fundación Proa, Argentina

### Buenos Aires, Argentina

The renewed building of the Museum of Fundación Proa, located in one of the oldest and most characteristic neighbourhoods of Buenos Aires in Argentina, trusted Bona for the finish and the protection of their 800m<sup>2</sup> wood floors of American Oak. Bona Naturale was chosen to maintain the feeling of natural wood and the rustic character of the floor. The work was carried out by the company GMEH e Hijos.

Type of floor:	American Oak
Surface area:	800 m <sup>2</sup>
Products used:	Bona Naturale Base Bona Naturale 1-comp.
New or Renovated:	Renovated
Year:	2009





## Butrón Castle, Spain

### Gatica, Spain

Butrón castle is located in Gatica in the province of Vizcaya in Spain. It originates from the Middle Ages, although it owes its present appearance to an almost complete rebuilding begun by Francisco de Cubas (also known as Marqués de Cubas) in 1878.

The castle has a fairy-tale look inspired by Bavarian castle models. It fell into disuse but was later renovated and opened to the public. Since 2008 the building has been closed for visitors although the grounds remain open.

Type of floor:	Parquet Oak (12 cm approx)
New or Renovated:	Renovated
Product used:	Bona Oil 45 (2 coats)
Flooring contractor:	Aitor Arroyo
Year:	2010





## Museum of Playing Cards, Spain

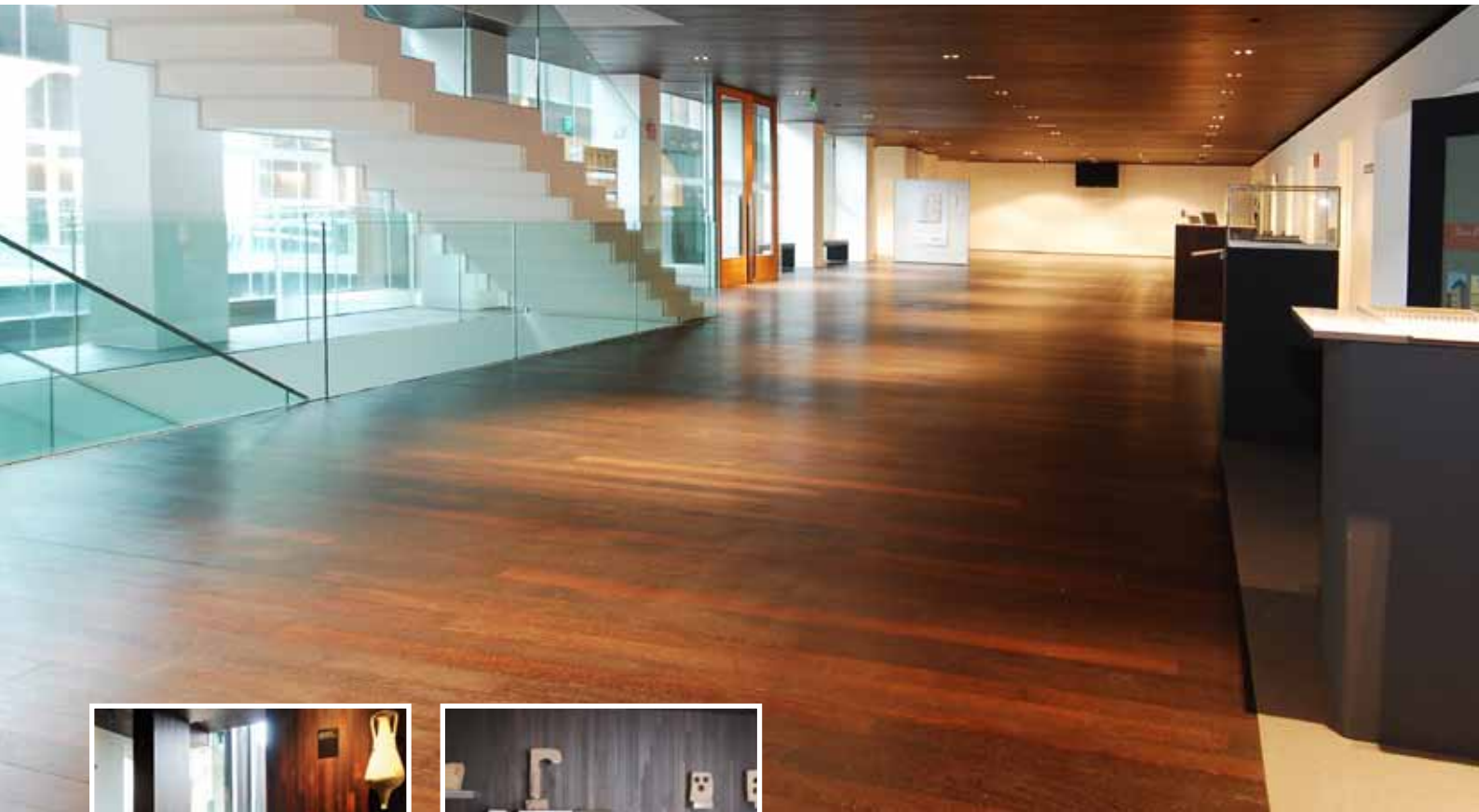
### Vitoria, Spain

The Arrieta-Maeztu Palace located in the heart of the city centre of Vitoria shelters one of the attractions of the city, Vitoria-Gasteiz Playing Cards Museum. The Museum has a collection of more than 20.000 playing cards. The museum has the honor of possessing one of the biggest collections of playing cards in the world.

Type of floor:	Lamparquet of Oak
Surface area:	250 m <sup>2</sup>
Products used:	Bona Prime Intense (1 coat) Bona Traffic Matt (2 coats)
Flooring contractor:	Rafael Decoración
Year:	2010







## Vivac Ethnographic Museum, Spain

Vitoria, Spain

This beautiful museum not only has wooden floors of Wengue, but also walls and ceilings of the same sort of wood.

Type of floor:	Solid 22 mm Wengue
Surface area:	1500 m <sup>2</sup>
Product used:	Bona Oil 45 (3 coats)
Flooring contractor:	Carpinteria Gamiz
Year:	2010





## Victoria Eugenia Theatre, Spain

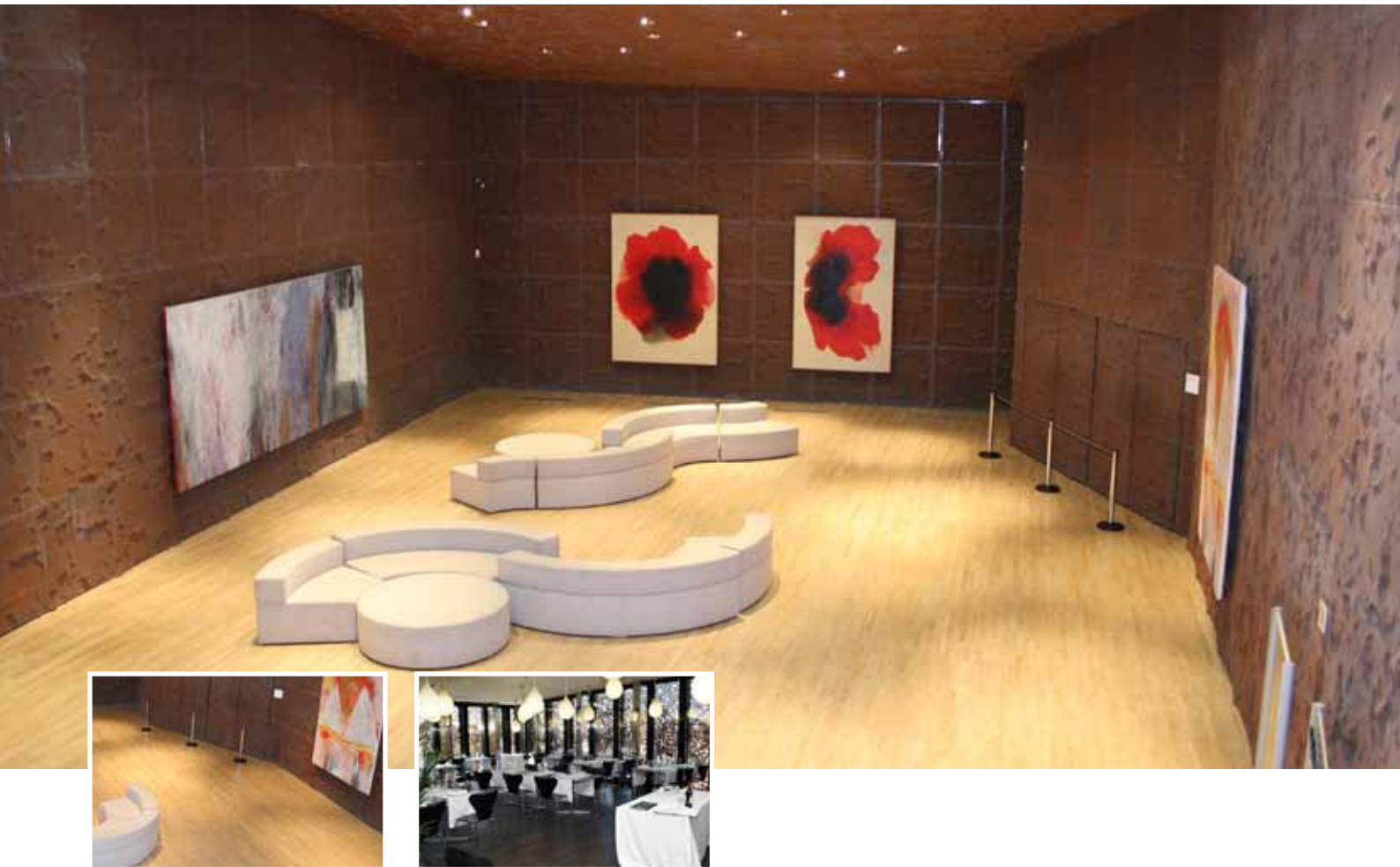
### San Sebastián, Spain

Located in the most central zone of the city, the Victoria Eugenia Theatre is one of the most emblematic buildings in San Sebastian. Laden with history, since its inauguration in 1912, the theatre has born witness to the main cultural events in the city.

Its recent renovation has turned it into an innovative stage, with the most modern equipment and services, whilst maintaining its charm and original characteristics.

Type of floor:	Lamparquet of Oak
Surface area:	200 m <sup>2</sup>
Product used:	Bona Mix&Fill Bona Traffic Matt (2 coats)
Flooring contractor:	Acuchillados Benito
New or Renovated:	Renovated
Year:	2010





## Caixa Forum, Spain

Madrid, Spain

The building has four floors and two of these have wooden floors. The auditorium hall has a oak floor with the size 25x5 m and it was finished with 2 coats of Bona Traffic Matt. Bona Oil 90 was applied in the Snack Bar on Jatoba floor.

Type of floor:	Oak & Jatoba
Surface area:	150 m <sup>2</sup> + 150 m <sup>2</sup>
Products used:	Bona Prime Classic (1 coat) Bona Traffic (2 coats) Bona Oil 90 (Snack bar)
Application method:	Bona Roller
New or Renovated:	New
Year:	2008







## British Museum – Korean Gallery, United Kingdom

### London, United Kingdom

This is now the largest space devoted to Korean art in Europe. The gallery has been set aside for a full-size reconstruction of part of a traditional Korean timber house.

The floor of the gallery is made up of 180 mm wide European oak boards, 20 mm thick, laid to a pattern based used in traditional Korean buildings. To achieve this, the oak panels were tongued and grooved on all four sides and assembled onto backing panels laid across the timber battens. These sit on a concrete slab and provide a narrow space for the complex electrical services that were needed to provide lighting, security alarms and conditioned air.

The Museum was particularly keen that any seal should bring out the grain of the oak without undue yellowing and that the finish should have a low sheen rather than high gloss.

Durability is of the utmost importance in the Museum which is visited by between 5 and 6 million people each year and extended public opening hours mean that opportunities to close galleries and completely reseal floors are infrequent.

Type of floor:	European Oak
Surface area:	300 m <sup>2</sup>
Product used:	Bona Prime (1 coat) Bona Traffic (3 coats)
Application Method:	Bona Roller
New or Renovated:	New





## National Portrait Gallery, United Kingdom

### London, United Kingdom

As part of a rolling programme of refurbishment of all the wooden floors in the National Portrait Gallery, Bona Traffic has been used to protect and finish original Burmese Teak block floors at this magnificent Grade 1 listed building.

“The Teak floors show the biggest change once they have been sanded back and finished with Bona Traffic lacquer”, explains Facilities Manager, Michael New. “The colour is now absolutely superb and completely natural. Bona Traffic also gives us the required durability to protect the floors from the wear caused by 1.5 million visitors who come into the gallery each year.”

By specifying water based Bona Traffic, Michael New also avoids health and safety issues, and potential damage to the priceless exhibits, which could be caused by solvent based products.

Type of floor:	Burmese Teak
Products used:	Bona Prime (1 coat) Bona Traffic – Silkmat (3 coats)
Application method:	Foam applicator
New or Renovated:	Renovated





## Singapore Art Museum, Singapore

### Singapore

A rich sovereign's Renaissance palace? Yes looking at the architecture of this beautiful building, it could well be that. But its history is fairly undramatic. From 1855, pupils were educated here in St. Joseph's Institution - a Catholic school for boys.

The school became a museum at the beginning of the 20th century. In 1992 it was decided that this former educational institution would become a "home" for Singapore's art collection and would also serve to promote regional and international contemporary art.

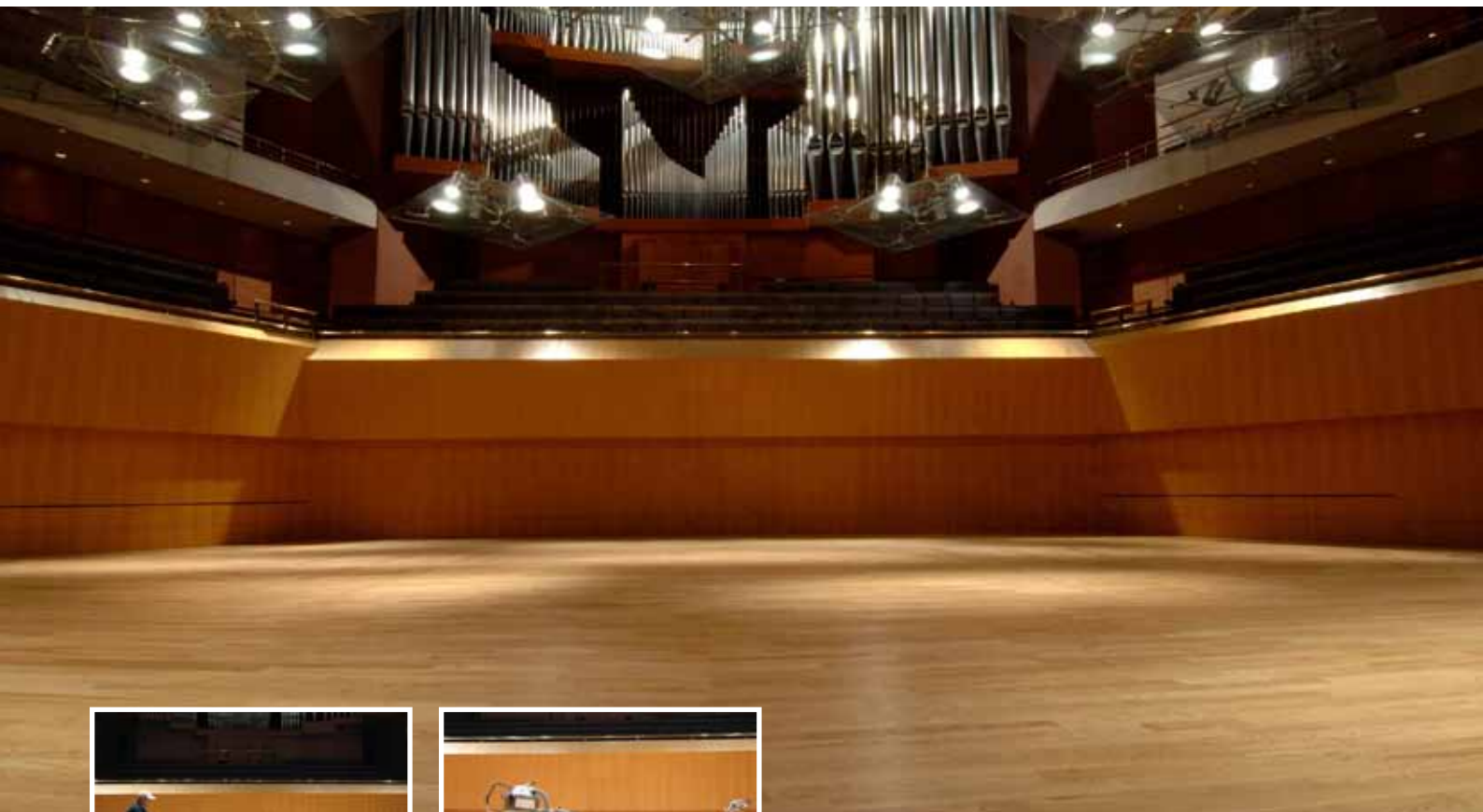
Its doors were reopened in January 1996, after 28 months of renovation work. The architectural team led by Mr Wong Hooe Wai, had accomplished the transformation of three entire buildings, plus built two new ones. By that, the museum consists of thirteen galleries with a total area of 10 0000 m<sup>2</sup>.

The heavy wear and tear to which the floor is subjected demands superlative floor varnish. To give the newly laid and exceptionally beautiful parquet flooring in Gallery 9 & 10 maximum durability, the architect recommended Bona Prime, followed by two coats of Bona Traffic.

Type of floor:	Jarrah strip parquet
Surface area:	223 m <sup>2</sup>
Product used:	Bona Prime (1 coat), Bona Traffic (2 coats)
Application method:	Bona Roller
Flooring contractor:	Sim Kim Heng Marketing Pte Ltd
New or Renovated:	New







## British Organ Museum, United Kingdom

### Manchester, United Kingdom

Bona's unique Dust Care System (DCS) helped a flooring contractor secure a valuable contract in a highly dust-sensitive environment. The contract involved the sanding and re-sealing of the stage in Manchester's prestigious Bridgewater Hall, the city's acclaimed international concert hall.

In its pre-launch tests, the DCS removed 99.996% of dust from the working environment and by connecting an edge sander and belt sander to the DCS unit at the same time, they were able to work very quickly.

The Contracts Director, Andy Acton said, "As we worked, the DCS unit drew all the dust away from the machines, the abrasives and the floor and the hall's Facilities Manager, George Sidgwick said, "The DCS was brilliant! I expected some dust to be generated but the system outperformed my expectations."

Type of floor:	American Red Oak
Surface area:	1,350 m <sup>2</sup>
Products used:	Bona Prime Classic (1 coat) Bona Mega (2 coats)
Application method:	Bona Roller
New or Renovated:	New
Year:	2007





## Stadsschouwburg De Harmonie Theatre, The Netherlands

### Leewarden, The Netherlands

The original theatre building, which dated back more than a century, was largely demolished and rebuilt in 1995, using modern materials and architecture. The old and beautiful parquet floors could be reused, and all of the 784 m<sup>2</sup> were retained. Only 106 m<sup>2</sup> of new flooring was laid.

Since the theatre building is also frequently used for concerts and conventions, the surface finish on the flooring is a vital factor. Approximately 200,000 people visit the theatre annually – a considerable number, which is why wear and tear is above average.

Alkema Parketonderhoud has widespread experience of Bona products, which were used throughout. They are easy to apply, while at the same time they have good filling properties. Or, as Johan Alkema expressed it “The big variety of activities tops all the proofs in your lab”.

Type of floor:	Oak mosaic parquet
Surface area:	678 m <sup>2</sup> . + 106 m <sup>2</sup> .
Products used:	Bona Prime (1 coat), Bona Mega (2 coats)
Application method:	Bona Roller
Flooring contractor:	Alkema Parket- onderhoud
New or Renovated:	New and Renovated





## North West Gallery, New Zealand

### Rotorua, New Zealand

The Rotorua Museum of Art & History is located at the historic “Great South Sea Spa”, more simply known as the “Bath House”. Opened in 1908 it was the first major investment made by the government in tourism. Thousands of people would flock to receive “the cure” from the thermal waters. By the 1960’s popularity had waned and in 1966 all treatments ceased at this building.

The Rotorua Museum officially opened in 1969 in one wing of the building and the Art Gallery in another wing 11 years later.

Now protected under the Historic Places Trust, the Rotorua Museum of Art & History is still a very popular tourist destination attracting visitors from all over the world.

Type of floor:	Matai
Surface area:	224 m <sup>2</sup>
Products used:	Bona Prime (1 coat) Bona Traffic (4 coats)
Flooring contractor:	Active Floor-sanding
New or Renovated:	Renovated
Year:	2005







## New Cultural Centre, Sweden

### Hässelholm, Sweden

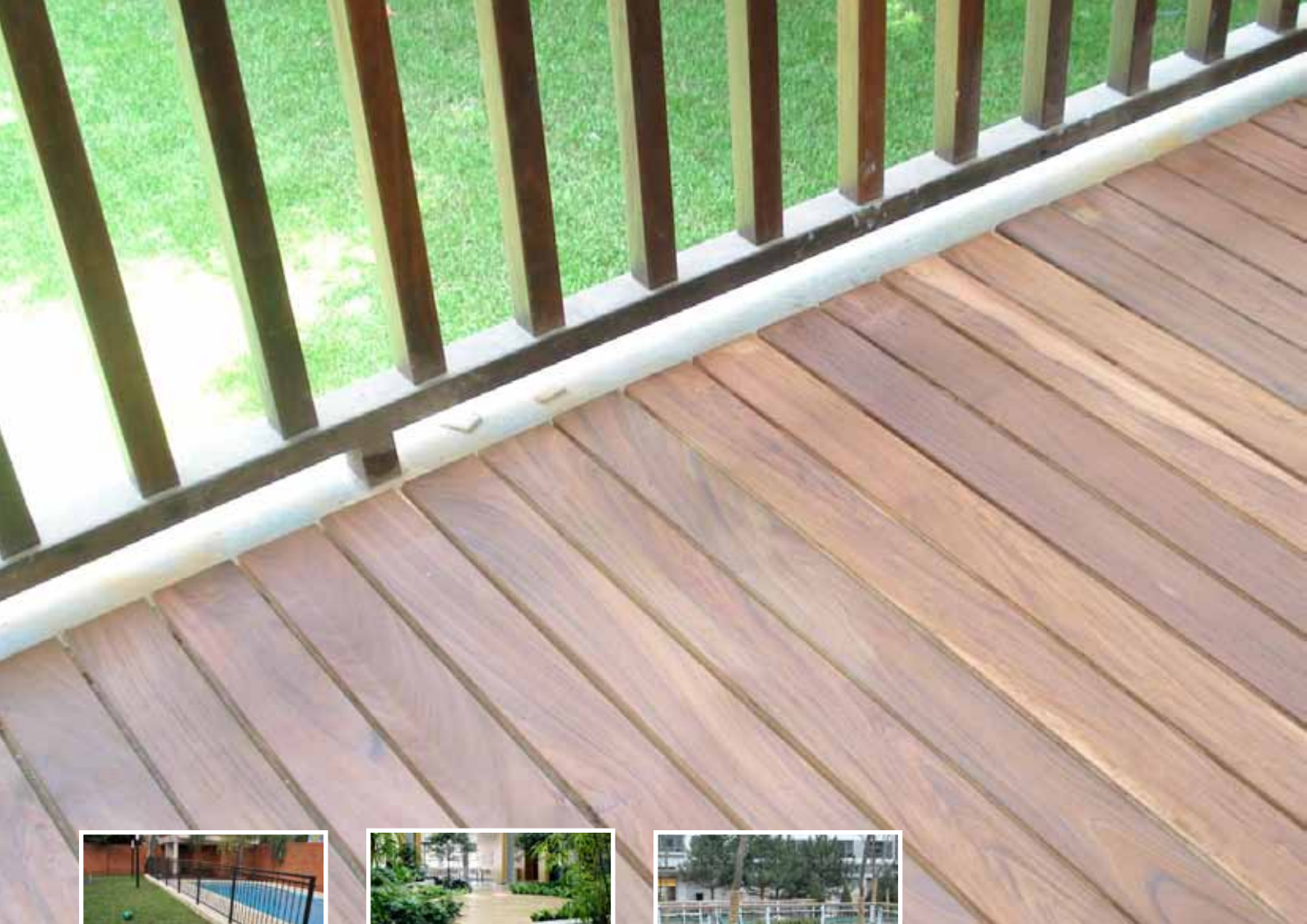
It's called "The Intelligent Cultural Centre". Space, large, open areas and an abundance of intelligent technology can be found behind the centre's red brick façade.

The library is characterized by bright, open areas. The issuing counter has a copper surface that will grow old gracefully, and the seating is of classic Swedish design. The Gothenburg-architectural firm, Erséus, Frenning och Sjögren designed the centre. The 12,000 m<sup>2</sup> building took two years to complete and the building contractor was PEAB. Apart from the library, the centre contains three cinemas, several reception rooms with advanced sound systems and flexible solutions for various purposes, a café and a tourist information centre.

Approximately 1,500 m<sup>2</sup> of oak parquet was treated with Bona Oil 45. Carl's Oil 25 is used for maintenance. A further 1,000 m<sup>2</sup> was finished three times with Bona Mega for optimal durability on those areas of flooring subjected to the heaviest traffic.

Type of floor:	Massive oak strip parquet
Surface area:	1,500 m <sup>2</sup> oil + 1,000 m <sup>2</sup> finish
Products used:	Bona Oil 45 Bona Mega (3 coats)
Application method:	Bona Roller
New or Renovated:	New
Year:	2000/2001





# Bona References

Outdoor





## Private home, Argentina

Type of floor:	Ipé
Surface area:	230 m <sup>2</sup>
Product used:	Bona Deck Oil
Flooring contractor:	Floortek SRL
New or Renovated:	Renovated
Year:	2010







Private home, Argentina

Product used:	Bona Deck Oil
Flooring contractor:	Ecoparket
New or Renovated:	New
Year:	2010





## Fourth Central Park, Beijing

Beijing, China

The fourth Central Park is located in Beijing Central Business District and situated amongst the top end apartments in Beijing.

Product used:

Bona Deck Oil

Surface area:

200.000 m<sup>2</sup>

Year:

2009







## Bona References

Sports centres and halls





## Racing Club de Strasbourg, France

Strasbourg, France

This is the training center of the local football team "Racing Club de Strasbourg".

Type of floor:	Wood floor
Surface area:	157 m <sup>2</sup>
Products used:	Bona Prime Classic (1 coat) Bona Traffic Silkmat (4 coats)
Year:	2009





## Bona Sportive, Latin America

The 15th Pan American Games was held in Rio de Janeiro, Brazil, from 13 July to 29 July, 2007. The 2007 edition prompted the Organizing Committee to restore important venues, and one that was renovated specially for playing basket ball was the indoor arena Autódromo de Jacarépagua, which was treated with Bona Sportive System. The Pan American Games is a multi-sport event, held every four years between competitors from all nations of the Americas.

The first Games were staged in Buenos Aires in 1951. Since then, the Games have been held every four years, with participation at the most recent event at over 5,000 athletes from 42 countries participating in 38 sports. It is expected that the games will improve infrastructure in the city and

lay the foundations for a possible bid for the 2014 FIFA World Cup.

To host the 2007 Pan American Games, the City of Sports Complex and other arenas of important international motor sport races such as the Formula 1 Grand Prix, Formula Indy and Motorcycle Speed Races, were turned into a mega sports complex with the capacity to stage several sport disciplines. The site now includes modern constructions such as the Rio Olympic Arena, where the Games' Basketball and Artistic Gymnastics competitions will be held. It was also the place of the Opening and Closing ceremonies which took place on July 14, 2007. Approximately 97,000 people came to see the fireworks at the opening, when President Luiz Inacio Lula

da Silva officially opened the Pan American Games, the biggest sporting event the city. Bon's distributor in Brazil, Resitech, has supplied the Bona Sportive system for the basket ball arena at the Pan American Games.







## Beijing Dong Jiong Badminton Club, P.R China

### Beijing, P.R. China

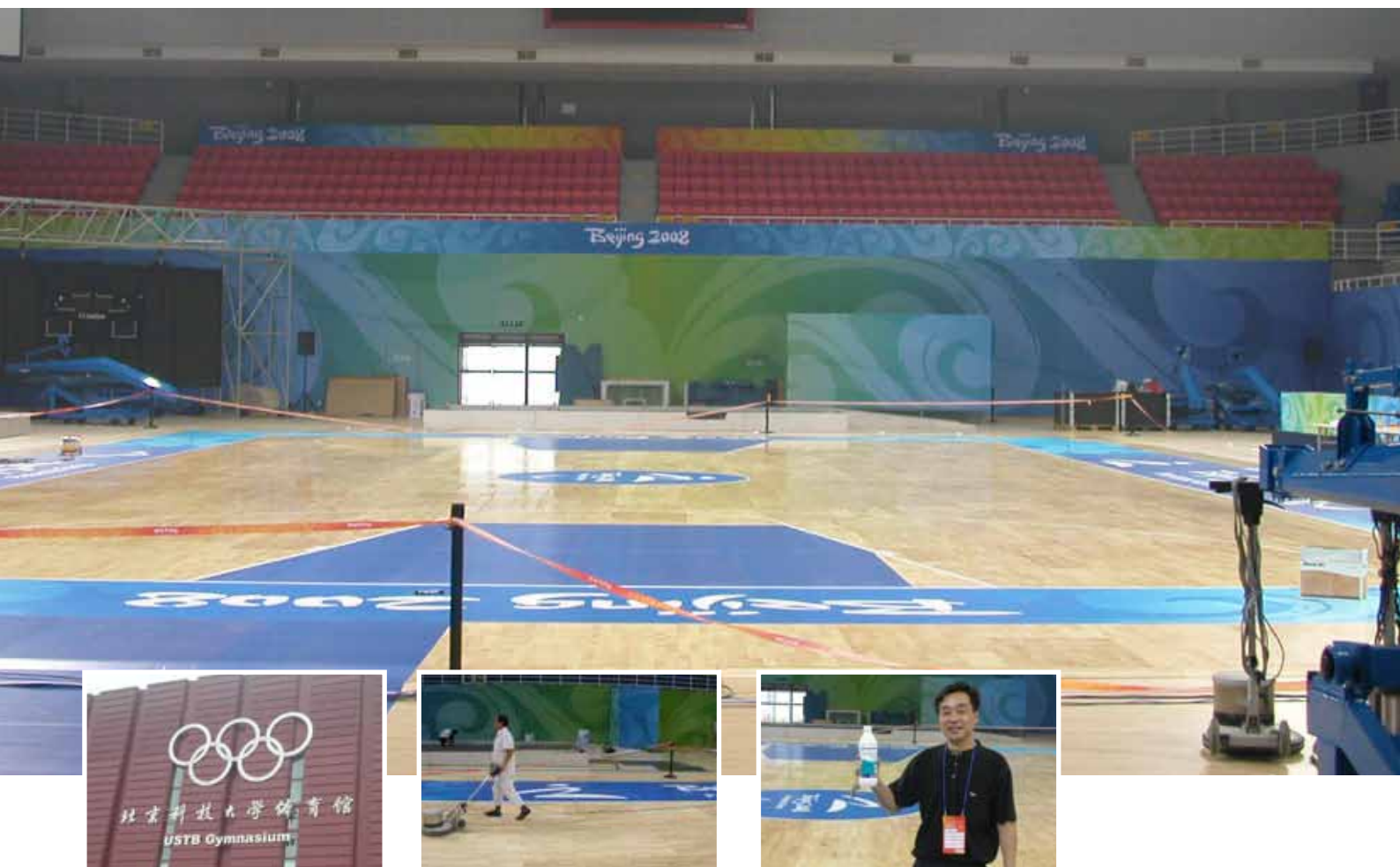
Dong Jiong is the silver medalist in Badminton, men's single, in Olympic games Atlanta 1996, World Cup Champion 1997, All England Champion 1998, Asian Games Champion 1999. He and his brother started a badminton clinic in Beijing 4 years ago. They have 1000 members between 7 - 16 years old and they have 4 halls around the city. The floor looks great and is a great improvement compared to the previous surface.

Dong likes above all the matt surface which doesn't reflect the spotlights and the non-slippery property which needless to say is extremely important for badminton players. And when it comes from a World Champion you have to believe it.

Type of floor:	Chinese Oak
Surface area:	800 m <sup>2</sup>
Products used:	Bona Sportive Prime (1 coat) Bona Sportive Matt (2 times)
Machines:	Bona Belt, Bona Mini Edge, Buffer
Application method:	Bona Roller
Flooring Contractor:	Beijing Professional Team
New or Renovated:	Renovated







## Beijing Science and Technology University, P.R China

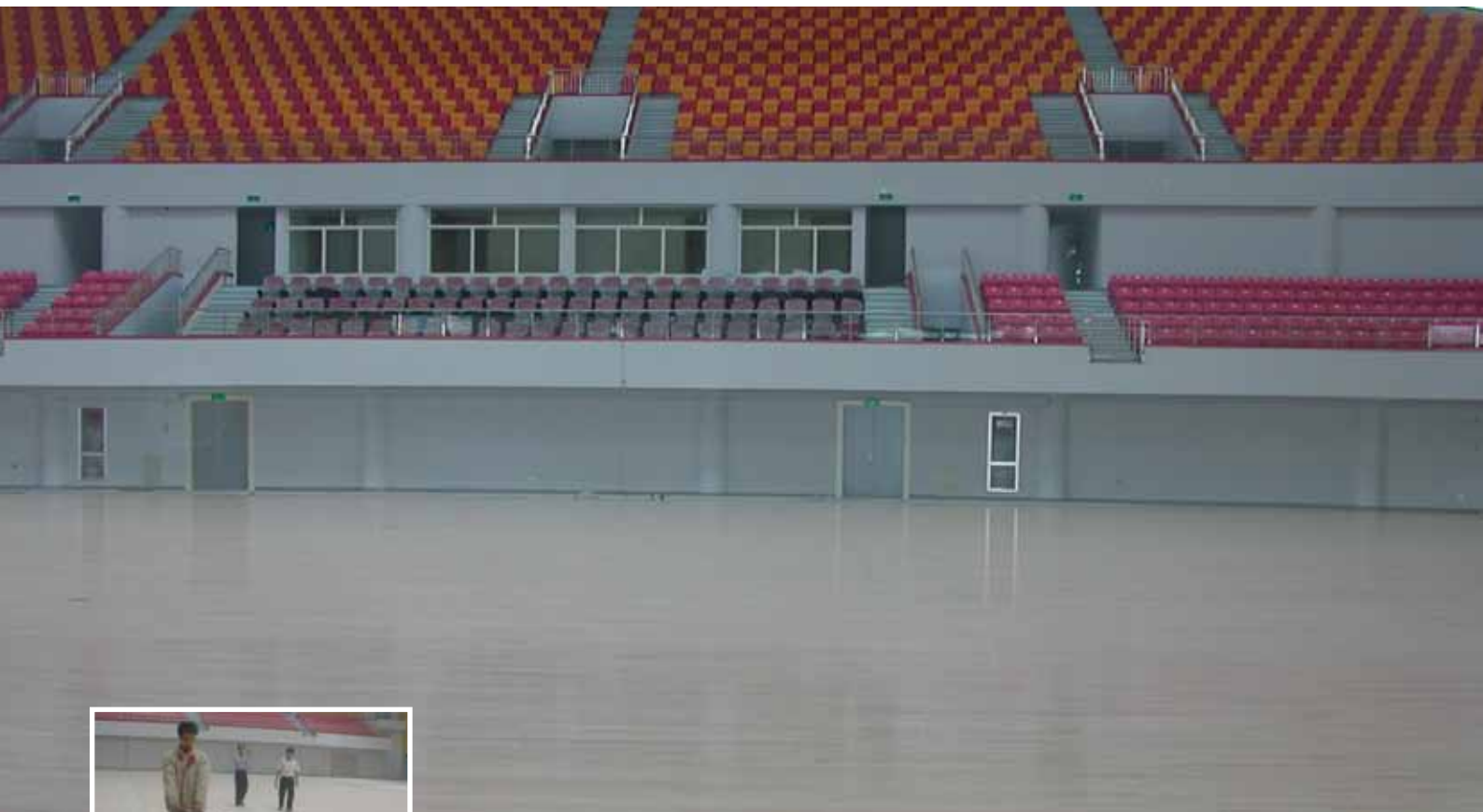
### Beijing, P.R. China

The Beijing Science and Technology University Gymnasium is positioned on the central axis of the University. The straight lines and strong sculptured blocks of the exterior design, with well-placed metal work reflecting both the calm and power of judo and taekwondo, display the strength and beauty of sports. The gymnasium was used for competition in Judo and Taekwondo during the Beijing 2008 Olympics.

After the Olympics and in preparation for the Para Olympics the floor was in need of maintenance. Our distributor cleaned the floor using a buffer and applied Bona Freshen Up to create a clean and slip-free surface.

Surface area:	400 m <sup>2</sup>
Product used:	Bona Freshen Up
Application method:	Bona Applicator Pad
Flooring Contractor:	Colwa
New or Renovated:	Maintenance
Year:	2008





## Shandong Province, P.R. China

The 11th National Games will be held in Shandong from October 11th to October 23rd, 2009 and is set to be China's largest and most high-profile sporting event since the country's hugely successful staging of the Beijing Olympic Games.

The National Games will feature 33 sports and 360 disciplines with the majority taking place in some 17 cities spread across Shandong. Jinan, the capital city of Shandong, is the lead venue for the event. More than 40 teams of over 10,000 athletes are expected to converge on the city before October 11, when the two-week event kicks off. Teams from all across China, including the Xinjiang Uygur autonomous region, Hong Kong and Macao, are expected to compete in the event.

Since the preparations began in 2005, 42 purpose-built venues have been constructed and further 85 have been refurbished and upgraded.

The new sports wooden floor is laid, sanded and coated by Hualiweiye and they have used the complete Bona System including Bona sanding machines.

Type of floor:	Unfinished Maple
Surface area:	2,600 m <sup>2</sup>
Products used:	Bona Prime Bona Mega
Application method:	Bona Applicator Pad
Flooring Contractor:	Hualiweiye
New or Renovated:	New
Year:	2009





## Wukesong Culture and Sports Center, P.R China

### Beijing, P.R. China

Beijing Olympic Basketball Gymnasium, the venue for the Olympic basketball preliminaries and finals, covering an area of 168,000 m<sup>2</sup>, the gymnasium has three floors underground and four floors above ground, with capacity for 18,000 spectators. One of our distributors in Beijing has recently completed the cleaning and maintenance for the sport floor of the Beijing Olympic Basketball Gymnasium. The wooden sports floor was laid by Mondo and the wooden sports floor is a pre-finished floor. The total sports floor area is about 3000 m<sup>2</sup>.

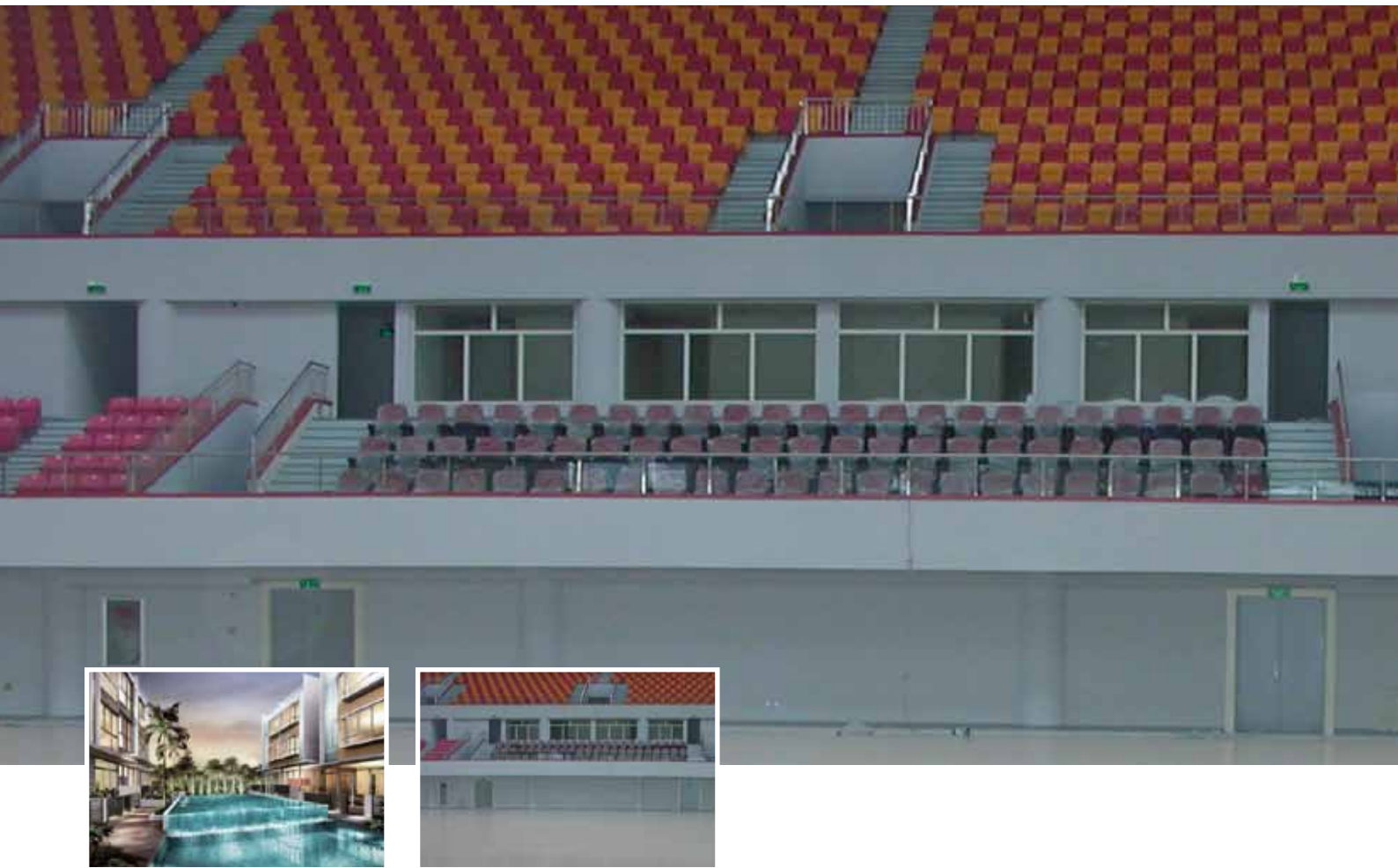
The reason for the maintenance of the sports floor was that it was very slippery and the athletes were worried about the slipperiness. Therefore, Danilo Frigimelica (Maintenance Manager of Mondo) and Wuwei (Project Manager of Mondo) contacted Bona to assist in rectifying the slip resistance.

The workers from our distributor were very active and as the time was very limited they worked non stop during one night in order to complete the project. During the test on the next day Mr. Danilo and the athletes were very impressed and very satisfied with the cleaning and maintenance. That evening the Good luck Beijing Basketball game commenced and was played with success.

Type of floor:	Pre finished Mondo Sports Flooring
Surface area:	3,000 m <sup>2</sup>
Product used:	Bona Freshen Up
Application method:	Bona Applicator Pad
Flooring Contractor:	Colwa
New or Renovated:	Renovated
Year:	2008







## Capital Indoor Stadium, P.R China

### Beijing, P.R. China

The Capital Indoor Stadium (CIS) is showing a fresh face as one of the 11 newly renovated venues for the Beijing 2008 Olympic Games. Built in 1968, the 18,000 seat stadium has been a comprehensive sport facility for table tennis, badminton, volleyball, basketball and gymnastics competitions, in addition to skating and ice hockey sports. On April 16, 2008, it hosted a trial run - the Good Luck Beijing 2008 China Club Volleyball Tournament and from August 23 to 24, 2008, the stadium staged the volleyball competitions during the Beijing Olympic Games.

Our sports floor distributor renovated the main volleyball court and several other smaller sports floor to be used for different types of competitions.

Surface area:	7,000 m <sup>2</sup>
Products used:	Bona Sportive Gloss (2 coats) Bona Sportive Primer (1 coat)
Application method:	Bona Roller
Flooring Contractor:	Dalian Qiansen
New or Renovated:	Renovated
Year:	2008

